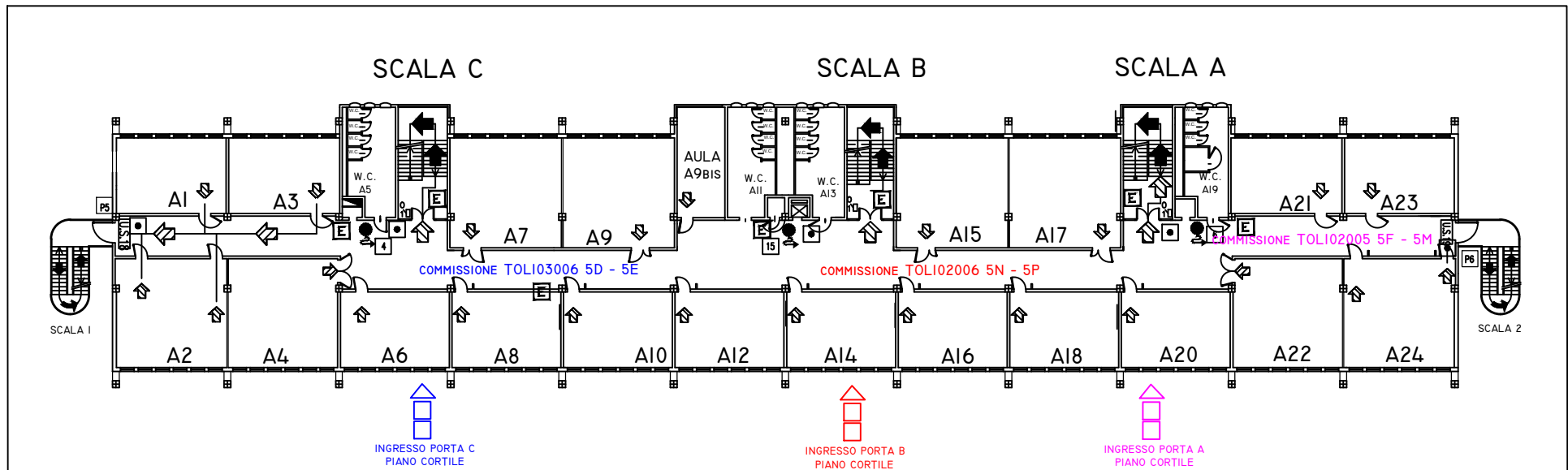


LICEO SCIENTIFICO C. CATTANEO

DISPOSIZIONE COMMISSIONI - ESAMI DI STATO A.S. 2021 - 2022

prove scritte



NUMERO STUDENTI PER CLASSE

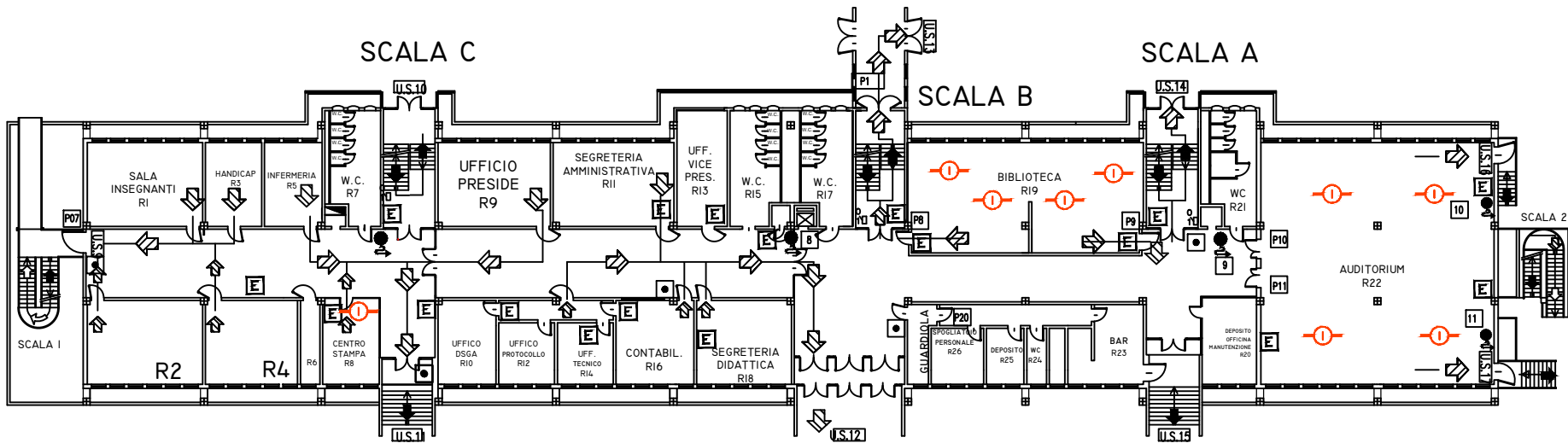
COMMISSIONE TOL103006
5D 19
5E 29

COMMISSIONE TOL102006
5N 31
5P 23

COMMISSIONE TOL102005
5F 29
5M 19

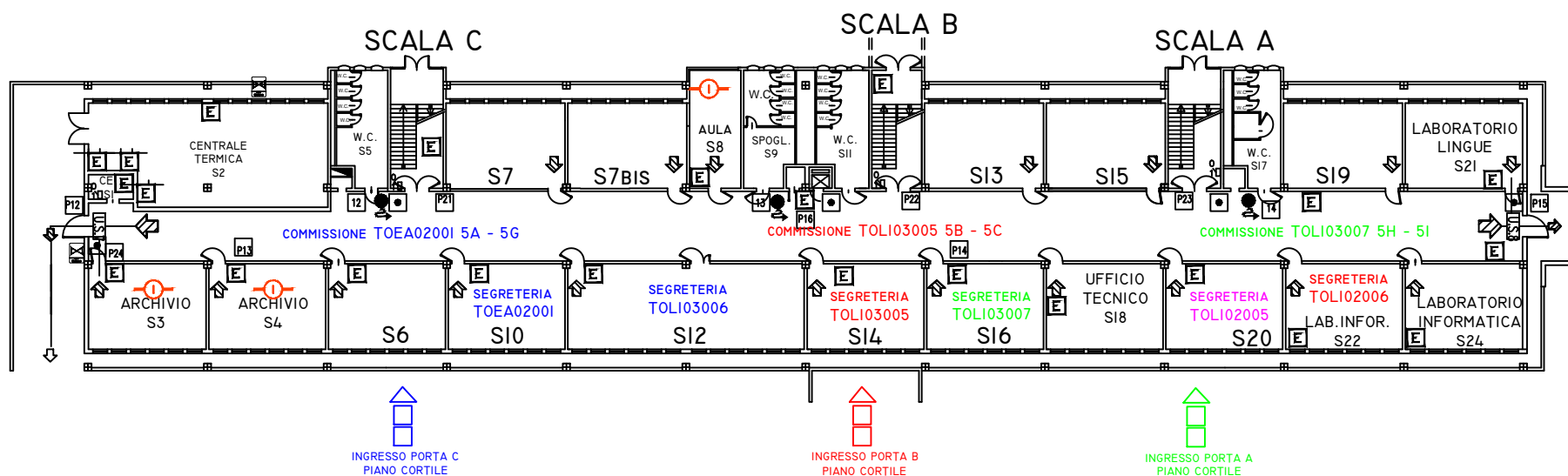
PIANO PRIMO

1



PIANO
RIALZATO

R



NUMERO STUDENTI PER CLASSE

COMMISSIONE TOEA02001
5A 20
5G 25

COMMISSIONE TOL103005
5B 21
5C 27

COMMISSIONE TOL103007
5H 21
5I 24

PIANO
SEMINTERRATO

S